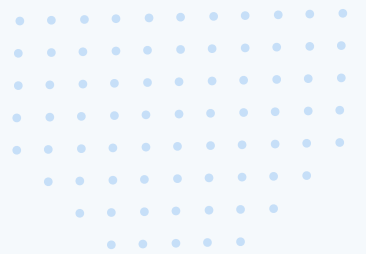




says



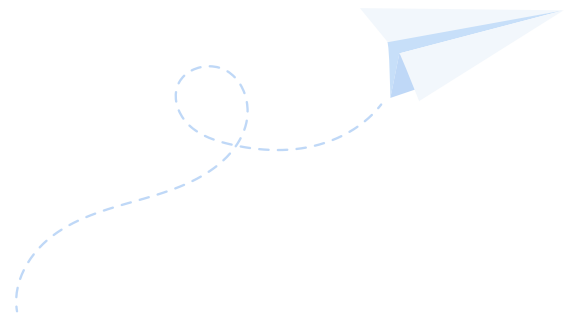
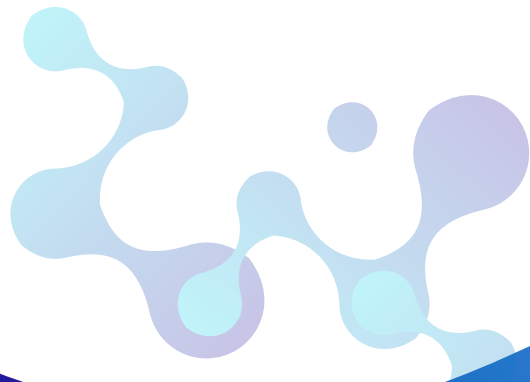
b.com



Multiple Choice Questions

Student's Name

Institution of Learning



Multiple Choice Questions

- Careless driving could result in...
D) All of the above are correct.
- A good way to fight the effects of fatigue is to...
B) split up long drives and rest between segments.
- You can speed up the process by which your body rids itself of alcohol by...
C) You cannot speed up the process of alcohol metabolism.
- If you are sharing the road with a suspected impaired driver, be...
B) beside the impaired driver
- During a rain shower, the road surface is likely to be most slippery...
C) in the first 30 minutes after the shower begins.
- A ____ is NOT a pedestrian.
B) person on a bicycle.
- The following is a parking regulation in California:
D) All of the above are correct.
- When backing up, you should...
A) turn your body and look out of the rear window.
- When your vehicle loses contact with the pavement and rides on a thin layer of water, it is...

- A)** “hydroplaning.”
- 10.** “City cycles” refers to...
- C)** the recurrent nature of urban traffic patterns.
- 11.** “No-Zones” are...
- A)** the large, dangerous blind spots around oversized vehicles.
- 12.** A YIELD sign means...
- A)** “slow down and be prepared to stop to surrender the right-of way.”
- 13.** Signs with white text on a green background are...
- C)** guide signs.
- 14.** The Basic Speed Law says that...
- A)** you should drive only as fast as is safe for prevailing conditions.
- 15.** “Laned roadways” use _____ to separate traffic moving in opposite directions.
- C)** yellow lines painted on the pavement.
- 16.** U-turns are prohibited...
- D)** All of the above are correct.
- 17.** Road rage...
- A)** is rarely associated with aggressive driving.
- 18.** Research has found that those who send text messages while driving are _____ times more likely to get into a crash or near wreck than undistracted drivers.

C) 23.

19. You should dim your headlights when following a vehicle within...

B) 300 feet.

20. A standard passenger vehicle's tires are required to have a minimum tread depth of...

A) 1/32 inch.

21. Children must ride in an approved child passenger restraint system unless they...

A) are eight years of age or older, or 4'9" or taller.

22. When passing another vehicle, you are allowed to exceed the speed limit by...

D) 0 mph.

23. If you pass a working emergency vehicle stopped on the side of a freeway, you should...

D) Both B and C are correct.

24. If you are driving on the freeway and miss your exit, you should...

B) keep going and exit at the next opportunity.

25. If you encounter an animal on the roadway, it's best to...

C) simply wait for it to clear on its own.